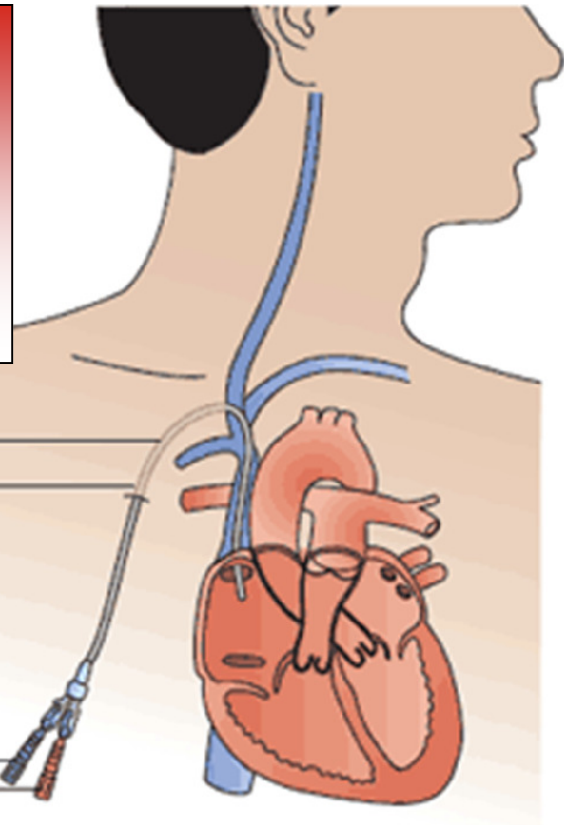
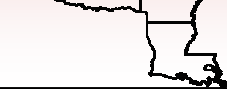


Catheters:

A temporary solution

ESRD NETWORK 13



- Generally, a catheter is intended to be a **temporary access for dialysis** until a permanent access can be placed.
- When used as a permanent access, a catheter can create many **complications and infections**.
- Catheters have a **higher risk for infection**.
- Many catheter infections can be **resistant to at least one antibiotic**.
- In 2006, patients with catheters were in the **hospital about 4 times more often** than patients with a fistula or graft.
- Although catheters are used for hemodialysis, **other access options provide less risk of infection**.
- Speak to your nephrologist to determine which permanent access (**fistula, graft**) is the right choice for you!

Nearly 1 in every 10 hemodialysis catheters fail each month as a result of a catheter-related bloodstream infection.

Studies have shown mortality rates of catheter-related bloodstream infection range from 12 – 25% .